

Compliance Rules

[[Presentation](#)] [[Compliance Rules menu](#)] [[Compliance template creation and edition](#)] [[Compliance Property Dialog Windows](#)] [[Compliance Rules List](#)] []

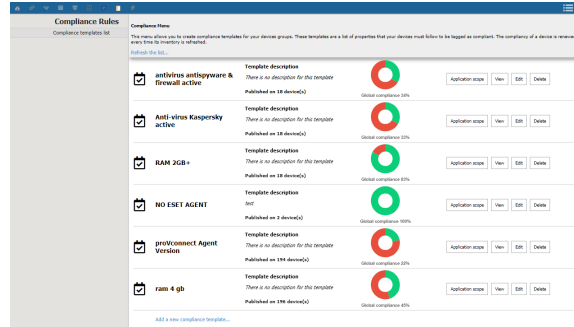
The **proVconnect Server** allows administrators to create **compliance templates**. These templates contains **rules that helps measure the compliance percentage of your devices**.

Important: Only the users having the **Device Compliance profile rule** can use this feature.

Presentation

The Compliance Rules is a feature which allows you to make your your devices are compliant with the rules you set. This feature is very broad and you can check the:

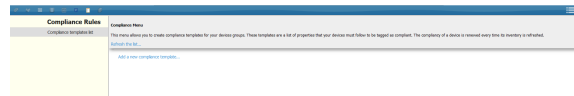
- **Hardware** compliance (ram, HDD, etc...)
- **Software** compliance (app versions, app presence etc...)
- **System** compliance (Bios versions, date etc...)
- **Security** compliance (antivirus activated, QFE etc...)
- etc...



Each rule's compliance result is displayed in a very clear way as a mini dashboard.

Compliance Rules menu

This menu allows you to create compliance templates for your devices groups. These templates are a list of properties that your devices must follow to be tagged as compliant. The compliance of a device is renewed every time its inventory is refreshed.

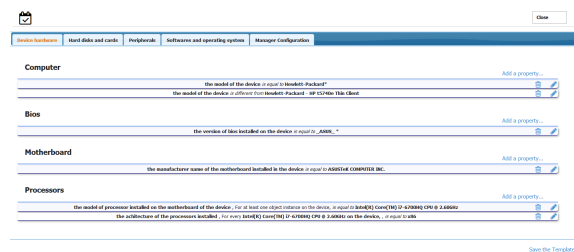


Refresh the list : Refresh the compliance percentage for your templates

Add a new compliance template : Go to the edition view of a compliance template

Compliance template creation and edition

This page allows the administrator to view and edit a compliance template



Compliance properties are divided into 5 different categories :

- **Devices Hardware** (Computer, Bios, Motherboards and Processors)
- **Hard disks and cards** (Network, Memory, Disk, Partition and Video Card)
- **Peripherals** (Monitor, Pointing device, Keyboard, Printer, Sound device)

- **Softwares and OS** (Applications, Qfe, OS, Device security)
- **Manager Configuration** (Devices group, Device tags, Monitoring rules)

Legend :



: Delete a property



: Edit a property

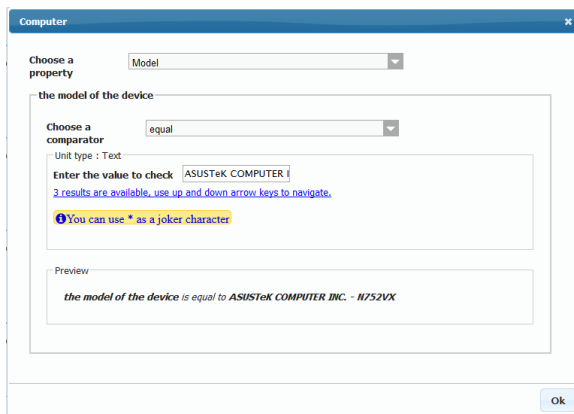
Compliance Property Dialog Windows

A) Property dialog for single values

Single Value Exemple : The model of a computer

Legend :

- **Dialog Title** : The name of the type for this property
- **Chose a property** : All available properties for the current type
- **Choose a comparator** : The comparator used to compare the actual values of the devices and the compliancy value set in this editor.
- **Unit Type** : can be Text, Date, Integer, Version...
- **Enter the value to check** : The input of the desired compliancy value
- **Results Available** : All the existing result for this property in the database
- **Joker Character** : Use * to replace any string of characters.

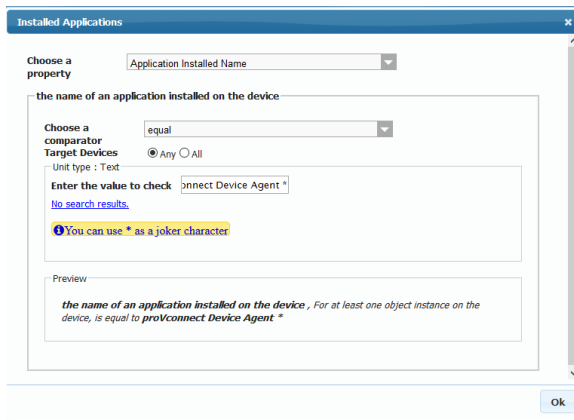


B) Property dialogs for list values

list of Values Exemple : The version of ultra VNC on the device is 2.11.1

Legend :

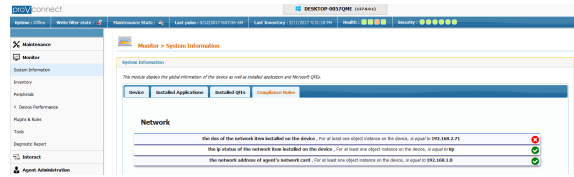
- **Target Devices** : The name of the type for this property
 - o **Any** : At least one installed applications must satisfy the condition
 - o **All** : All the installed applications must satisfy the condition
 - o **Application Installed Name** : All application with this name must satisfy the condition



Compliance Rules List

Compliance View Details in the single view of a device

On the single view of a device, we can find **the list of all the compliant and non compliant properties** applying to this device.



The conformity properties set on a device can come from different compliance rules
